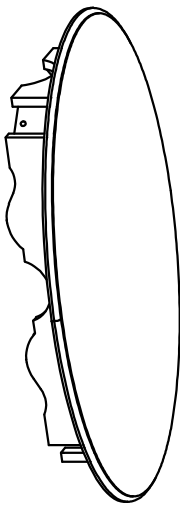


ASSEMBLY INTRUCTION
6324XXX CLASSIC COFFEE TABLE

PART LIST

A: 1 pc

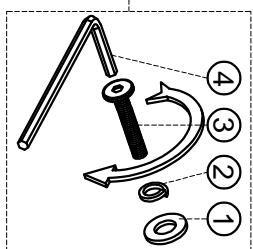
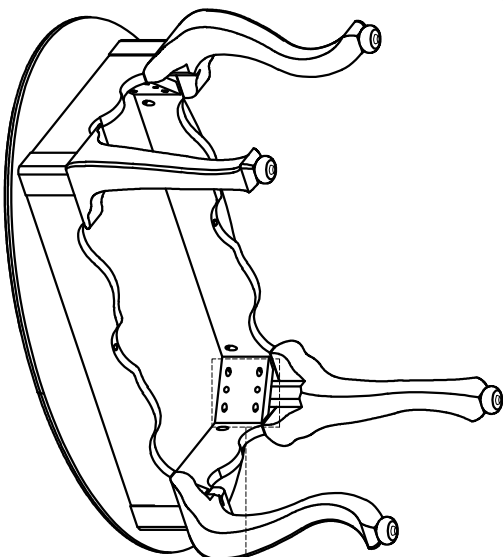
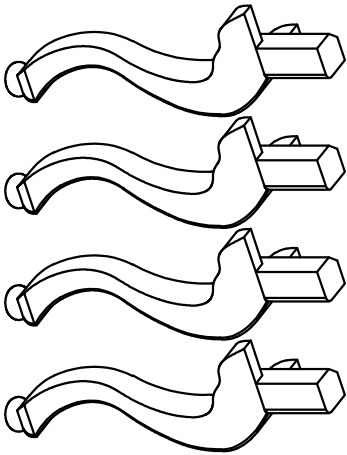


Step: 1

DO NOT FULLY TIGHTEN BOLTS UNTIL THE ENTIRE ITEM IS COMPLETELY ASSEMBLED

- Insert the legs into the top table, insert bolt the legs.
- Align the legs and top table evenly.
- Tighten the 8 bolts.

B: 4 pcs



- Repeat this step for remaining legs.

Step: 2

- Finish.

HARDWARE LIST

NO	QUANTITY	PICTUER	QTY
1	Flat Washer		8
2	Boock Washer		8
3	Bolt M6x50		8
4	Key K4		1

